



17RK BAJA EDITION





17RK

*All photos represent non-Baja edition



17RK ELECTRIC TONGUE JACK



17RK AM/FM/DVD/
BLUETOOTH® RADIO



17RK CONVECTION MICROWAVE



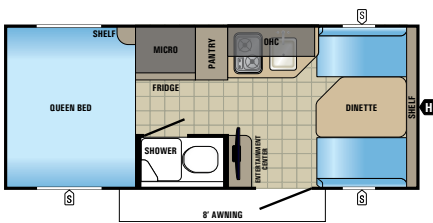
17RK BIKE RACK



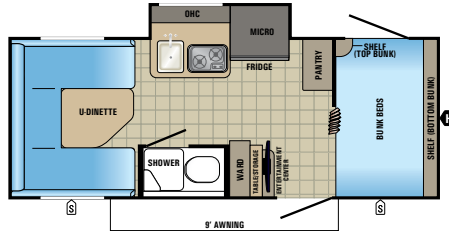
17RK



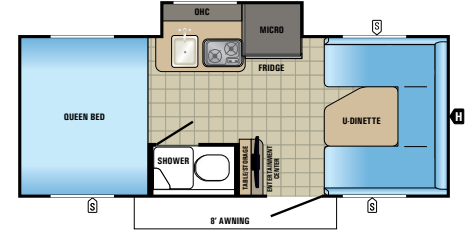
17RK



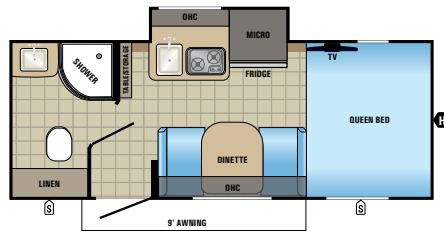
HUMMINGBIRD | 16FD
 Ext. Length: **18' 10"** Travel Ht.: **110"**
 Unloaded Wt. (lbs.): **2,555** Sleeps: **3-4**



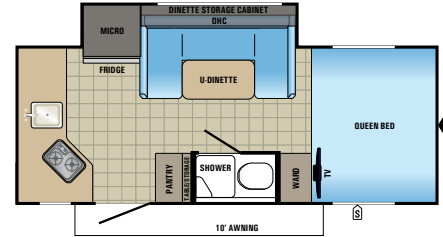
HUMMINGBIRD | 17BH
 Ext. Length: **19' 9"** Travel Ht.: **109"**
 Unloaded Wt. (lbs.): **2,935** Sleeps: **4**



HUMMINGBIRD | 17FD
 Ext. Length: **19' 9"** Travel Ht.: **109"**
 Unloaded Wt. (lbs.): **2,715** Sleeps: **3-4**



HUMMINGBIRD | 17RB
 Ext. Length: **19' 9"** Travel Ht.: **109"**
 Unloaded Wt. (lbs.): **2,840** Sleeps: **3**



HUMMINGBIRD | 17RK
 Ext. Length: **19' 9"** Travel Ht.: **109"**
 Unloaded Wt. (lbs.): **2,910** Sleeps: **3-4**

SPECS

| MODELS | DIMENSIONS | | | | WEIGHT (LBS.) | | | | TANKS (GALS.) | | |
|--------|------------|------------------------|----------------|----------------------------|-----------------|-------------------------|------------------|-----------------------------|-------------------------|--|---------------------------|
| | FLOORPLAN | EXTERIOR TRAVEL LENGTH | EXTERIOR WIDTH | EXTERIOR HEIGHT (WITH A/C) | INTERIOR HEIGHT | UNLOADED VEHICLE WEIGHT | DRY HITCH WEIGHT | GROSS VEHICLE WEIGHT RATING | CARGO CARRYING CAPACITY | FRESH WATER CAPACITY (INCLUDES WATER HEATER) | GREY WASTE WATER CAPACITY |
| 16FD | 18' 10" | 97" | 110" | 78" | 2,555 | 270 | 3,500 | 945 | 31.6 | 25.4 | 25.4 |
| 17BH | 19' 9" | 97" | 109" | 78" | 2,935 | 375 | 3,750 | 815 | 31.6 | 25.4 | 25.4 |
| 17FD | 19' 9" | 97" | 109" | 78" | 2,715 | 290 | 3,750 | 1,035 | 31.6 | 25.4 | 25.4 |
| 17RB | 19' 9" | 97" | 109" | 78" | 2,840 | 315 | 3,750 | 910 | 31.6 | 25.4 | 25.4 |
| 17RK | 19' 9" | 97" | 109" | 78" | 2,910 | 325 | 3,750 | 840 | 31.6 | 25.4 | 25.4 |

Unloaded Vehicle Weight (UVW): Sometimes referred to as "Dry Weight," UVW means the typical weight of this trailer as built at the factory. The UVW, as used in product literature and other promotional materials, does not include cargo, fresh water, propane, options or dealer-installed accessories.

Gross Vehicle Weight Rating (GVWR): GVWR means the maximum permissible weight of the trailer, including the UVW plus passengers, personal items, all cargo, fluids, options and dealer-installed accessories. The GVWR is equal to or greater than the sum of the UVW and the CCC.

Cargo Carrying Capacity (CCC): CCC means the maximum weight of all passengers, personal items, food, fresh water, propane, tools, other cargo and dealer-installed accessories that can be carried by the trailer. CCC is equal to or less than GVWR minus UVW. The addition of options will decrease the CCC.

Hitch Weight (HW): The hitch weight, as used in product literature and other promotional materials, does not include cargo, fresh water, propane gas, options or dealer-installed accessories. The addition of these types of items will either add to or subtract from the stated hitch weight.

It is important for your safety and enjoyment that your tow vehicle be adequately sized and equipped to tow and handle the GVWR of the RV you select. Review weights and rating of your tow vehicle and consult a competent advisor for questions or advice. Whether you are new to RVing or a veteran, get a feel for the performance of your tow vehicle before heading out on the roadways. When you tow an RV, you must drive differently than when you drive a single vehicle. Practice hooking up, driving, backing up and braking in a safe environment or seek out professional instruction. Jayco affixes a weight label to each RV which lists weight information for that vehicle. See specifications chart above.

STANDARDS AND OPTIONS

STANDARD EXTERIOR EQUIPMENT

- Aerodynamic, rounded profile with front and rear black diamond plating
- Graphics package with 2-colored sidewall
- TuffShell™, vacuum-bonded laminated floor, roof and sidewalls with wrapped aluminum cage front and rear wall
- Norco® frame with integrated A-frame
- Single axle with rubber-torsion suspension
- G20 tinted safety-glass windows
- Marine-grade exterior speakers (2)
- Nitrogen-filled radial tires
- Impact-resistant powder-coated, black aluminum fenders
- U-channel drip rail over slideout
- 30-amp service with detachable power cord
- 20-pound propane bottle with auto regulator with cover
- Outside grill propane quick-disconnect port
- Exterior TV bracket with cable and satellite hookups
- Rear camera backup prep
- 26-inch-wide entry doors with gas-strut and frosted window
- LED exterior lights
- 25.5-gallon fresh water, black and grey tanks
- Aluminum entry step(s)

STANDARD INTERIOR EQUIPMENT

- Folding 2-foot x 4-foot picnic table with interior storage compartment
- Screwed-and-glued cabinetry
- Smoked glass decorative inserts (select overhead cabinets)
- Ball-bearing drawer glides with 75-pound capacity
- LED lighting throughout
- 2-burner cooktop
- Plywood dinette and bed bases
- High-density dinette cushions with vinyl backing
- Jayco-exclusive Simmons® mattress with bedspread and pillows
- 2.1-amp USB port in all models
- Decorative window treatments with pleated nightshades

CUSTOMER VALUE PACKAGE

- Aluminum wheels
- Solar-ready
- Self-adjusting electric brakes
- 4 stabilizer jacks with pads
- 6-gallon gas/electric DSI water heater
- Folding assist handle

Black tank flush

- Outside shower
- 3-cubic-foot 2-way Norcold® refrigerator
- 18,000-BTU Atwood furnace
- AM/FM/CD/DVD/Bluetooth® stereo with speakers
- Convection microwave
- Power awning with LED light

OPTIONS

- 24-inch LED TV
- Low-profile 13,500-BTU A/C (mandatory)
- Baja Package: Goodyear® 15-inch off-road mud tires, 5-inch clearance and double entry step
- Electric tongue jack
- Goodyear spare tire
- 2-bike carrier rack (A-frame-mounted)
- Exterior grill
- Enclosed underbelly with Astro-Foil™ insulation
- Goodyear nitro-filled radial tires (made in the U.S.A.)

THE ALL-NEW HUMMINGBIRD: ULTRA LIGHT FOR BIG-TIME FUN

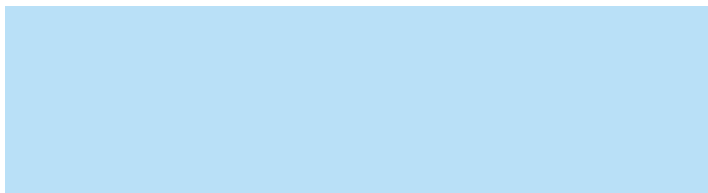
The latest addition to the towable lineup is built with all the features that set Jayco apart—durability, reliability and strength in a lightweight package—for peace of mind that makes camping heavy on fun.



1. **Vacuum-bonded floor, sidewalls and roof** for better protection from the elements
2. **Norco® frame** with integrated A-frame prevents the hitch from buckling
3. **Power awning with remote-controlled, multi-color LED lights**
4. **Optional A-frame-mounted 2-bike carrier**
5. **2,715 to 2,910 pounds in unloaded vehicle weight** for comfortable towing
6. **6-gallon gas/electric DSI water heater**
7. **LED exterior and interior lighting throughout**
8. **Aluminum entry step(s)**
9. **26-inch entry door with frosted glass privacy window**
10. **Exterior TV bracket with 110V and cable outlet**
11. **Solar prep** makes efficient, environmentally friendly camping a breeze



Meet your Jayco Dealer



We work hard—so you can play hard. From finding the perfect Jayco for your family to providing flexible financing options and full-service support, we're here to help.

Follow Jayco



Jayco, Inc., PO. Box 460, Middlebury, IN 46540, www.jayco.com See dealer for further information and prices. All information in this brochure is the latest available at the time of publication approval. Jayco reserves the right to make changes and to discontinue models without notice or obligation. Photos in this brochure may show optional equipment and props for photography purposes. RVs built for sale in Canada may differ to conform to Canadian codes. ©2017 Jayco, Inc. 274734-1 0217-15K Printed in U.S.A.

Travel with Confidence

2
YEAR
LIMITED
WARRANTY

At Jayco, we build our RVs to handle every adventure, then back it with our industry-leading 2-year limited warranty. We, with support from our select partners, have you covered for **2 camping seasons**. That's **730 days**. You won't find a better warranty in the business, because the only strings we attach are those that deliver the ultimate in reliability. That's the Jayco difference. So go explore. We have the warranty that will follow you anywhere. For a copy of our 2-year limited warranty with complete terms and conditions, please contact your local Jayco dealer.

eco advantage™

Jayco's long-term commitment to generations of family fun

After five years of increased efforts to eliminate waste, conserve energy and increase recycling, we've come a long way in building RVs that are not only better for your family—but also better for the planet. Learn more at Jayco.com/EcoAdvantage